

TELEVISION TECHNICAL BULLETIN

MODELS 66DW18H 76DW18H

SYMPTOM While in the RGB mode, sync may be lost when the channel up or down buttons are pressed.

CAUSE Corruption of the EPROM data.

ACTION Change the EPROM, using the part number given below.

<u>REF NO</u>	<u>DESCRIPTION</u>	<u>PART NUMBER</u>	<u>PRICE CODE</u>
IC1004	EPROM, 66DW18H	CH-IX1642CJH0	AZ
IC1004	EPROM, 76DW18H	CH-IX1642CJH1	AX



TELEVISION TECHNICAL BULLETIN

MODELS 66DW18H 76DW18H

SYMPTOM While in the NTSC mode, colour or sync may be lost.

CAUSE Corruption of the EPROM data.

ACTION Change the EPROM, using the part number given below.

<u>REF NO</u>	<u>DESCRIPTION</u>	<u>PART NUMBER</u>	<u>PRICE CODE</u>
IC1004	EPROM, 66DW18H	CH-IX1642CJH0	AZ
IC1004	EPROM, 76DW18H	CH-IX1642CJH1	AX

TELEVISION TECHNICAL BULLETIN

MODELS 66DW18H 76DW18H

SYMPTOM Poor teletext performance.

CAUSE Poor video signal level into the teletext decoder and errors in the EPROM data.

ACTION Carry out the following circuit change.

1. Change R447 (connected to pin 9 of IC401) with a 0R jumper.
2. Change the EPROM (IC1004) with the one listed below.

<u>REF NO</u>	<u>DESCRIPTION</u>	<u>PART NUMBER</u>	<u>PRICE CODE</u>
IC1004	EPROM, 66DW18H	CH-IX1642CJH0	AZ
IC1004	EPROM, 76DW18H	CH-IX1642CJH1	AX
R447	SMD resistor, 0R	VRS-TV1JD000J	AA

TELEVISION TECHNICAL BULLETIN

MODELS 66DW18H 76DW18H

SYMPTOM In the RGB mode, the picture is displaced to the right.

CAUSE Error in the EEPROM data.

ACTION While in the service mode, change the data in the following location.

NVM Page : 08
NVM Address : 5C
Data : 45 (was 36)

TELEVISION TECHNICAL BULLETIN

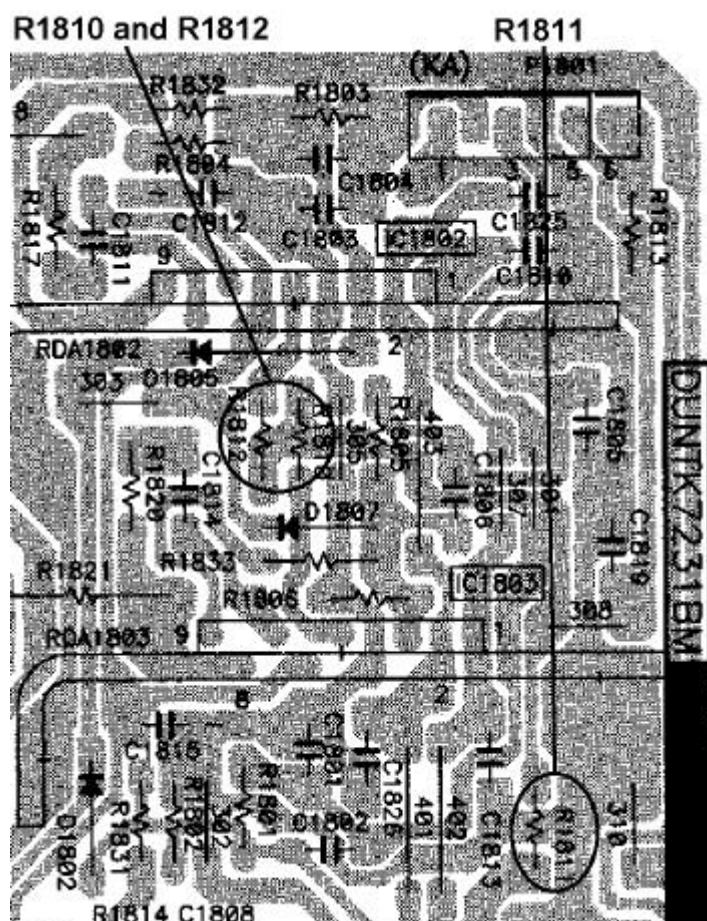
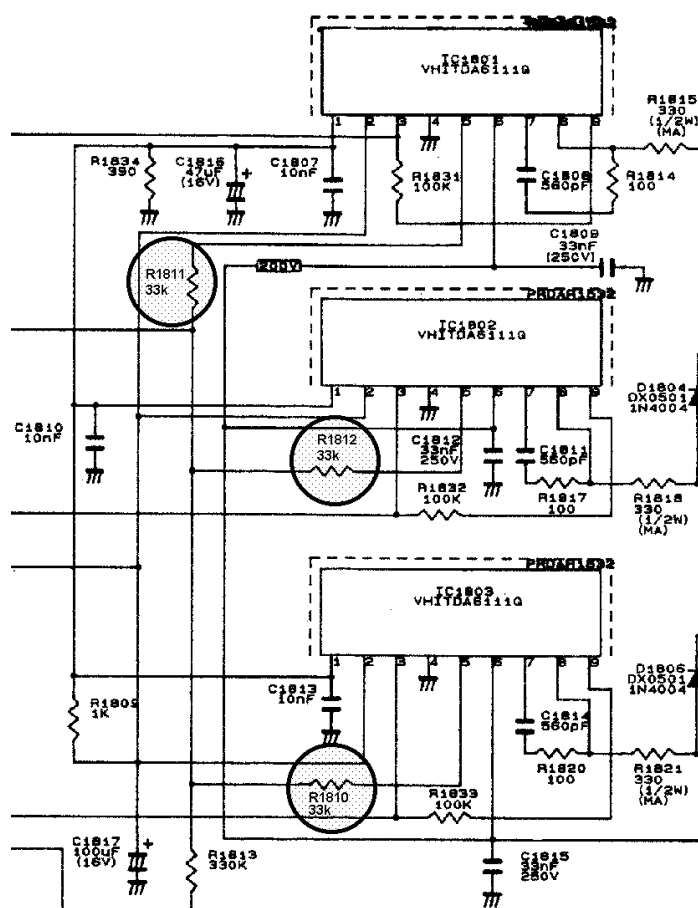
MODELS 66DW18H 76DW18H

SYMPTOM No picture - blank raster.

CAUSE R1810, R1811 and R1812 changing in value.

ACTION Replace R1810, R1811 and R1812.

REF NO	DESCRIPTION	PART NUMBER	PRICE CODE
R1810	Resistor 33k Ω , 1/8W	VRD-RA2BE333J	AB
R1811	Resistor 33k Ω , 1/8W	VRD-RA2BE333J	AB
R1812	Resistor 33k Ω , 1/8W	VRD-RA2BE333J	AB



Location of R1810, R1811 and R1812 on the CRT PWB

Sharp Electronics (UK) Limited

Reference AM270799

Revision 2



TELEVISION TECHNICAL BULLETIN

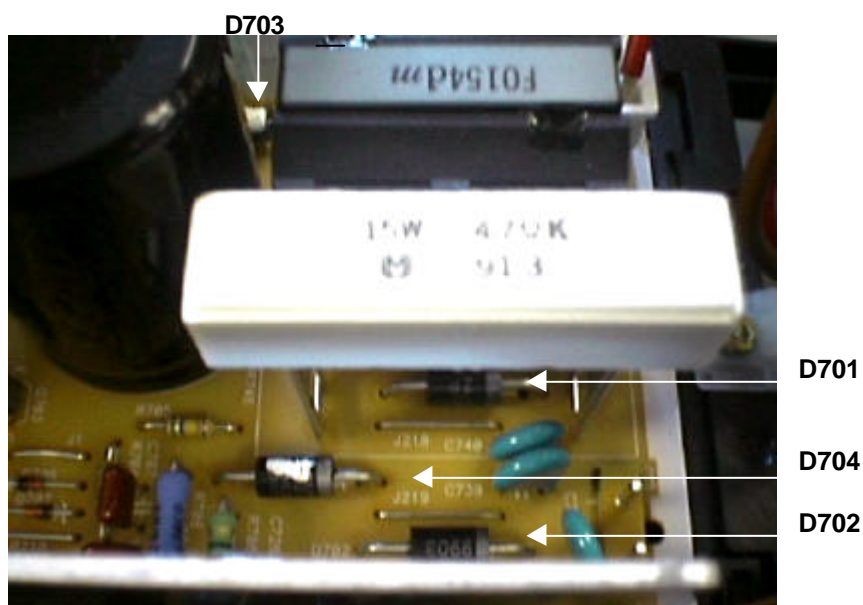
MODELS 66DW18H 76DW18H

SYMPTOM The reciever does not turn on - mains fuse blown.

CAUSE Bridge rectifier diodes short circuit (D701, D702, D703 and D704).

ACTION Replace D701, D702, D703 and D704 with the part specified below.

<u>REF NO</u>	<u>DESCRIPTION</u>	<u>PART NUMBER</u>	<u>PRICE CODE</u>
D701	Diode, RM4ALF-L1	RH-DX0317BMZZ	AD
D702	Diode, RM4ALF-L1	RH-DX0317BMZZ	AD
D703	Diode, RM4ALF-L1	RH-DX0317BMZZ	AD
D704	Diode, RM4ALF-L1	RH-DX0317BMZZ	AD



Sharp Electronics (UK) Limited

Reference **UK93000X**

Revision **1**



TELEVISION TECHNICAL BULLETIN

<u>MODELS</u>	66DW18H	76DW18H	76EF19H	76EF20H
---------------	---------	---------	---------	---------

SYMPTOM The following problems can occur on the 100Hz PWB.

- Intermittent digital noise on the picture
- Intermittent mosaic squares on the picture
- Mosaic effect if the 100Hz PWB is tapped
- Red, green or blue screen if the 100Hz PWB is tapped

CAUSE Problems around the field mixer IC, SDA9270.

- IC6108 in the 66DW18H and 76DW18H
- IC6105 in the 76EF19H and 76EF20H

ACTION Carry out the following counter measures.

1. Make sure that there are no dry joints on the Mother PWB
2. Resolder IC6108/IC6105 by reflowing the device - it is not necessary to remove IC6108/IC6105

Note that you can operate the 100Hz PWB with the shield cans removed.

It is important that these are returned to there original condition when the job is completed.

TELEVISION TECHNICAL BULLETIN

MODELS 66DW18H 76DW18H

SYMPTOM The circuit diagram in the service manual for the line output transformer is incorrect.

ACTION Correct the circuit diagram so that pin 8 reads pin 10 and pin 10 reads pin 8.

Sharp Electronics (UK) Limited

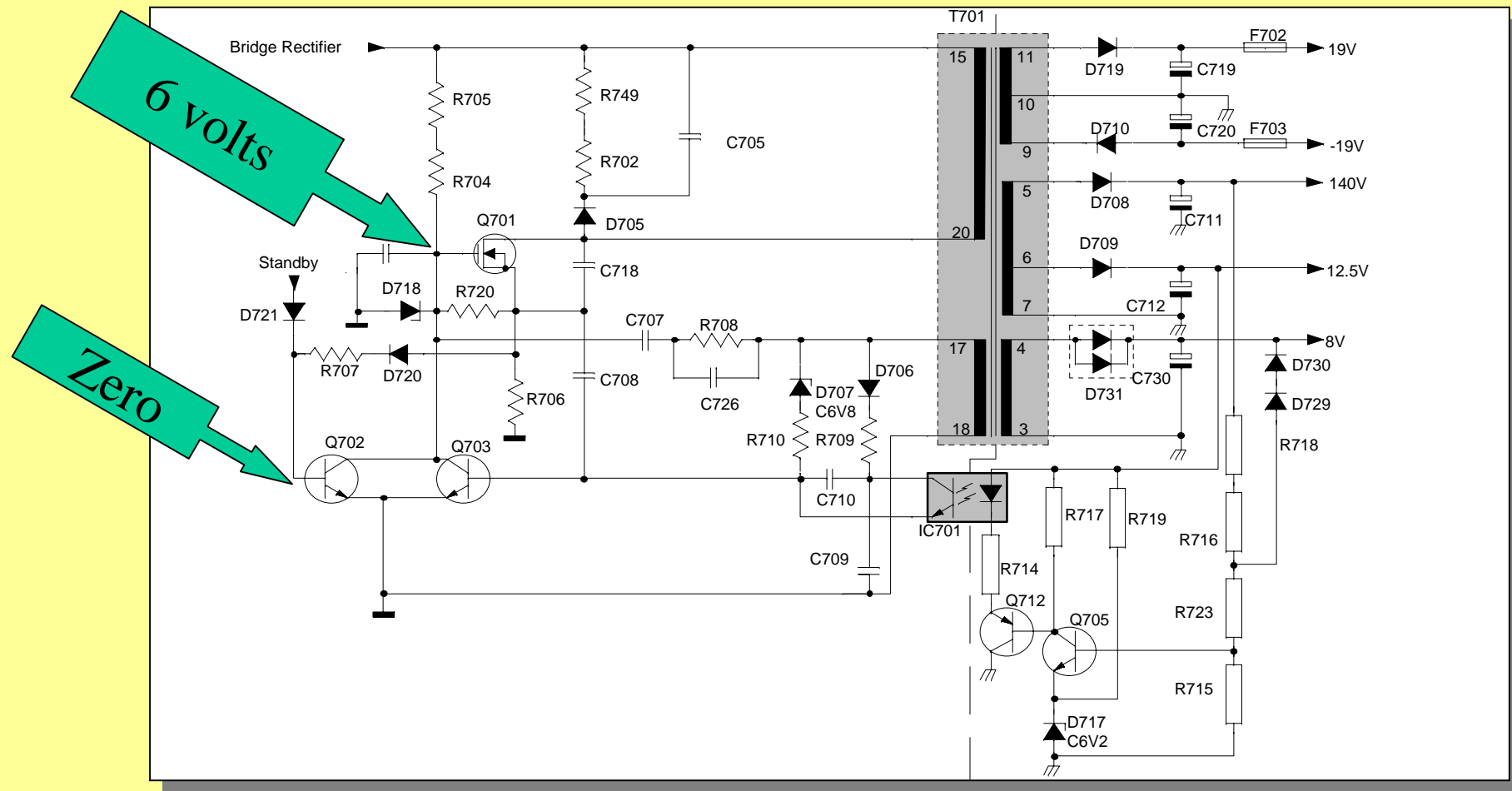
Reference **AM140100-1**

Revision **1**

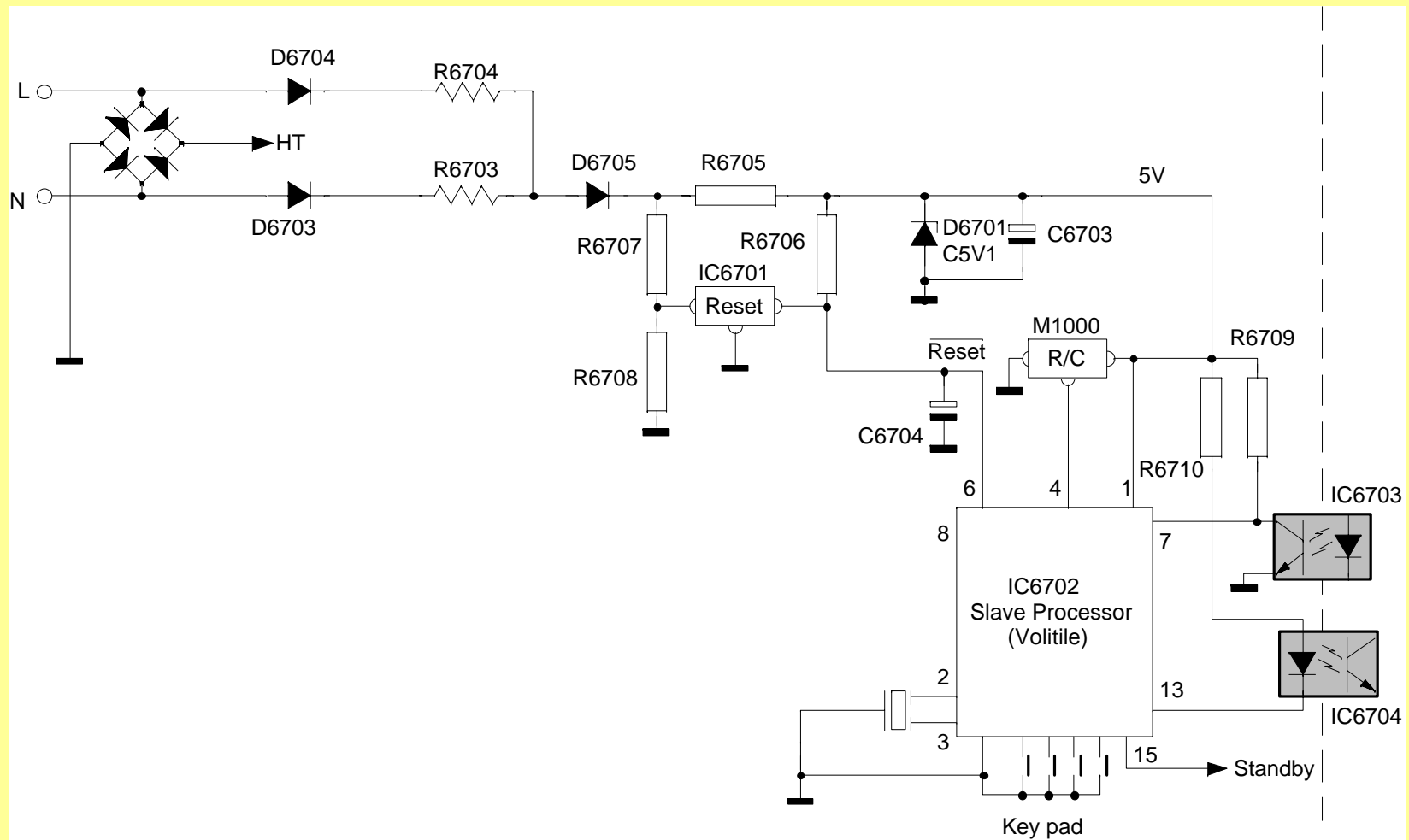


White – Carry out as required, Yellow – Carry out as required and whenever the unit comes in for service, Red – Carry out on all units

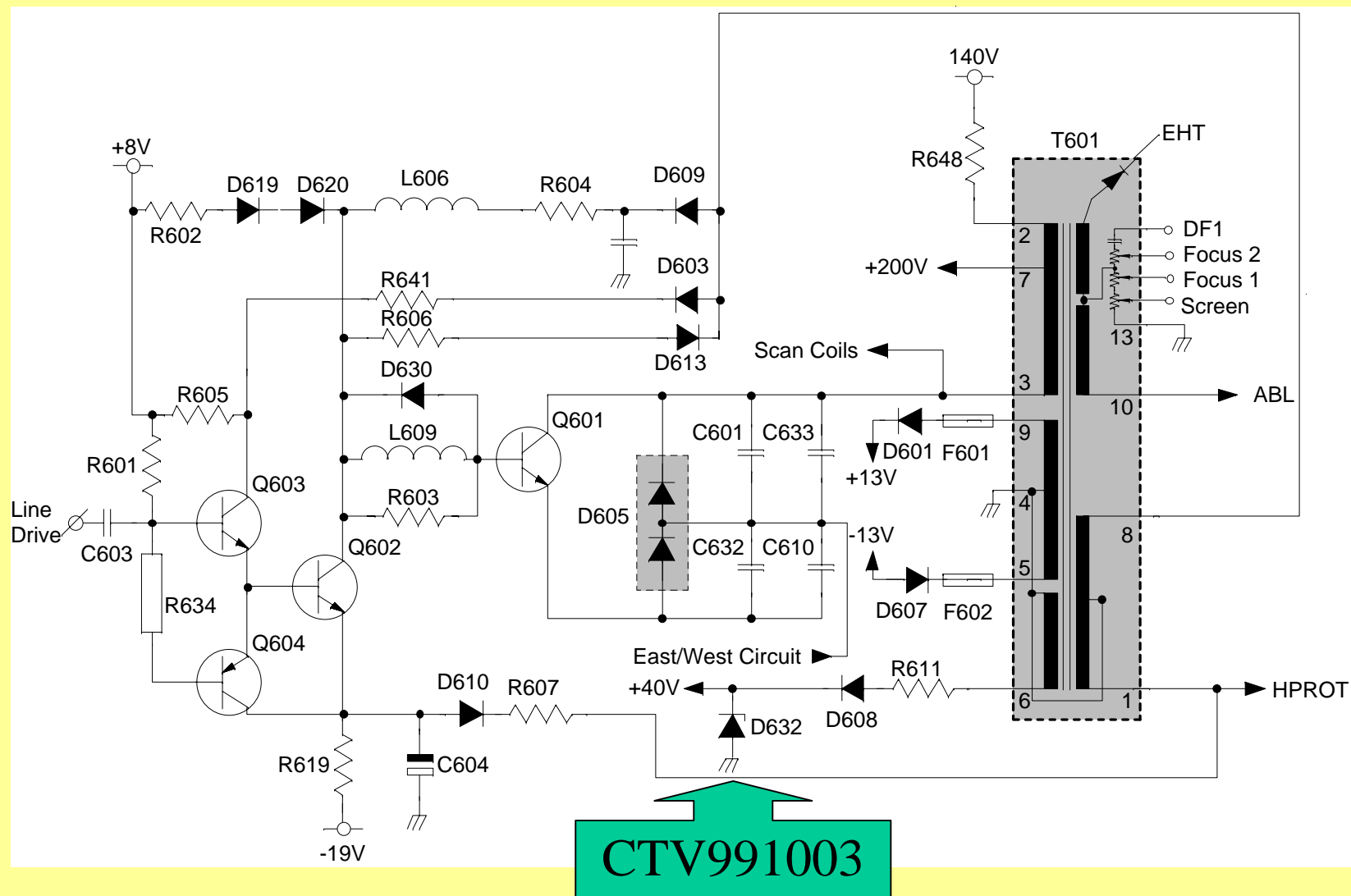
Power Supply (Main)



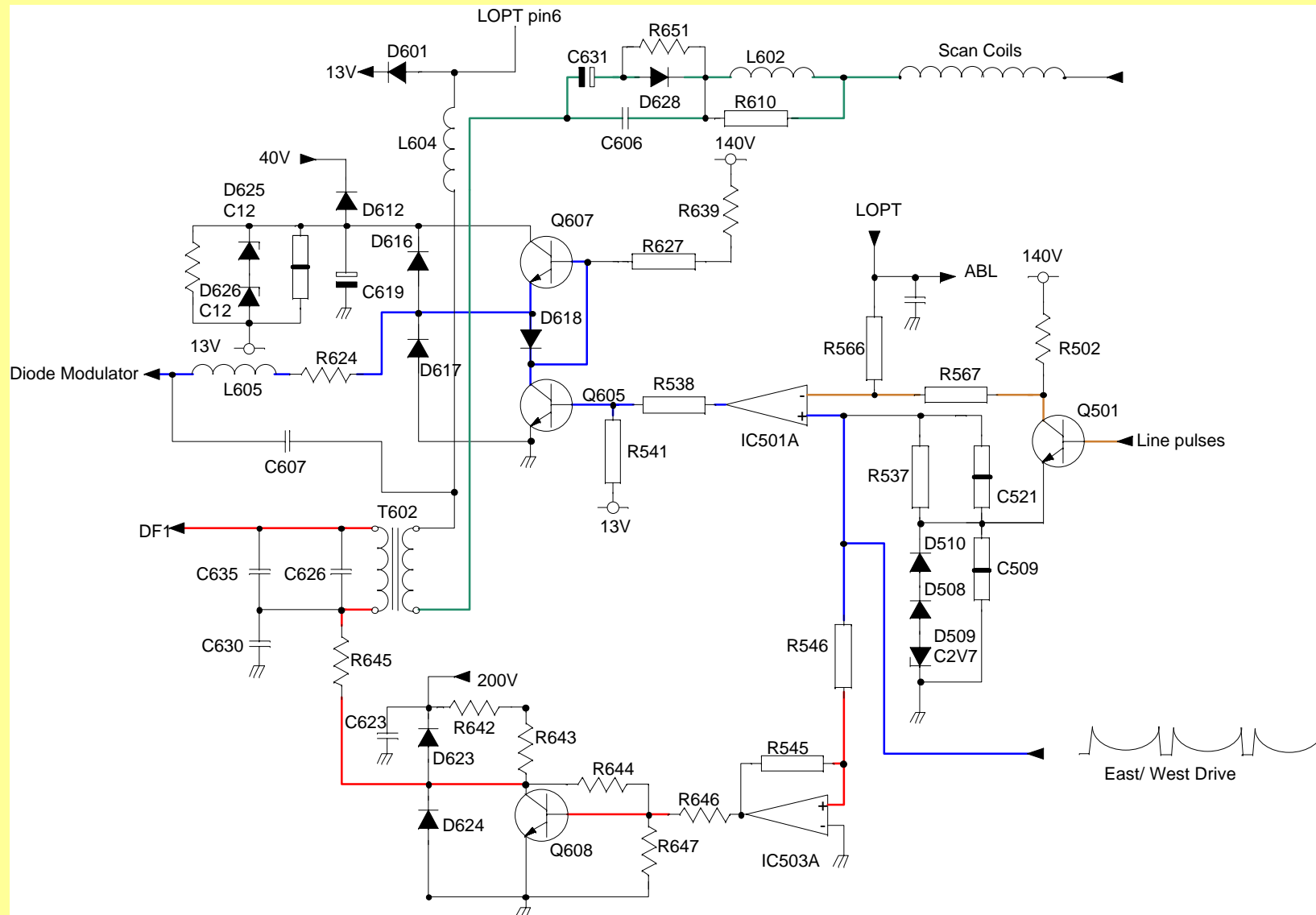
Slave Processor



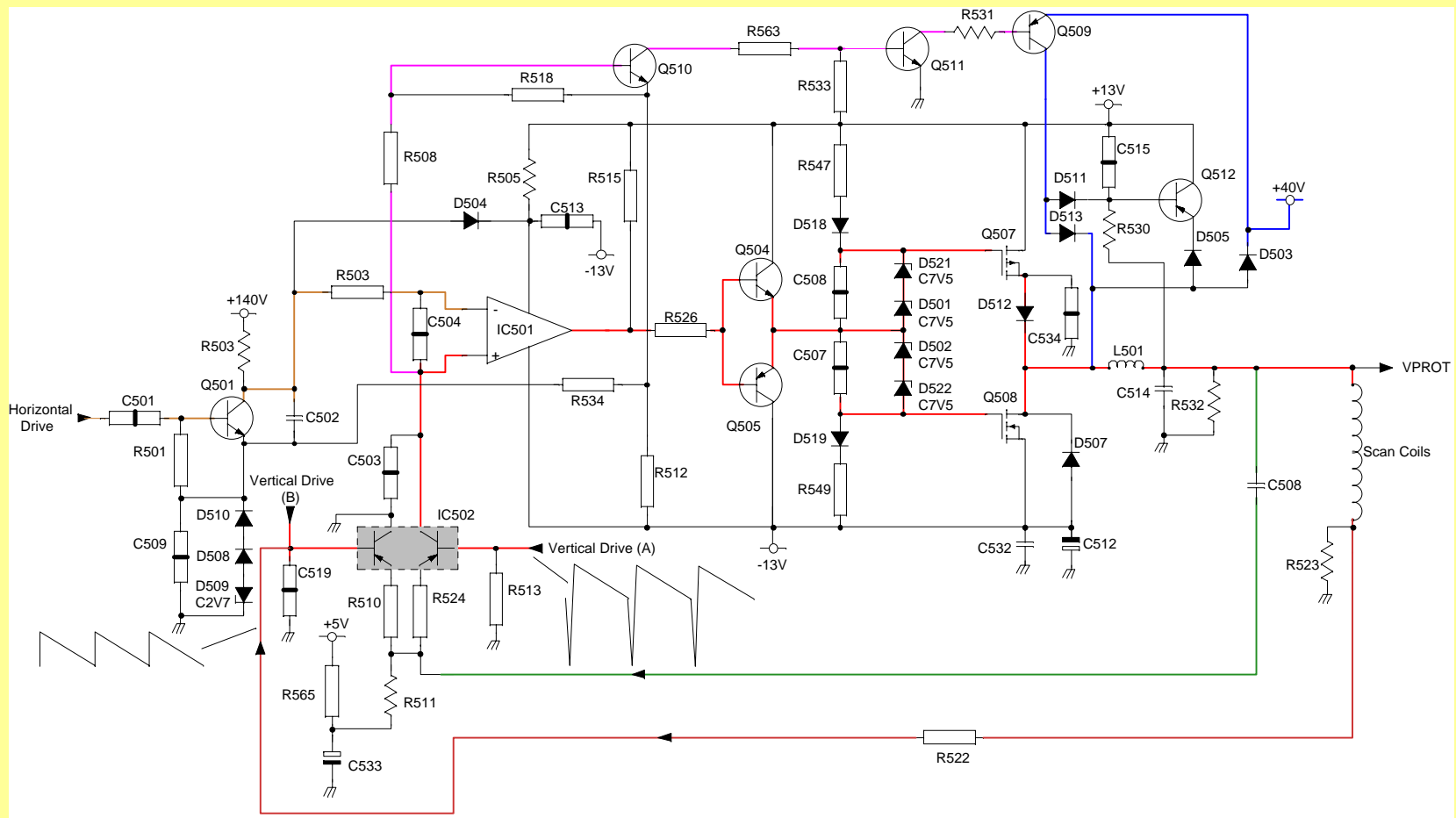
Line Output



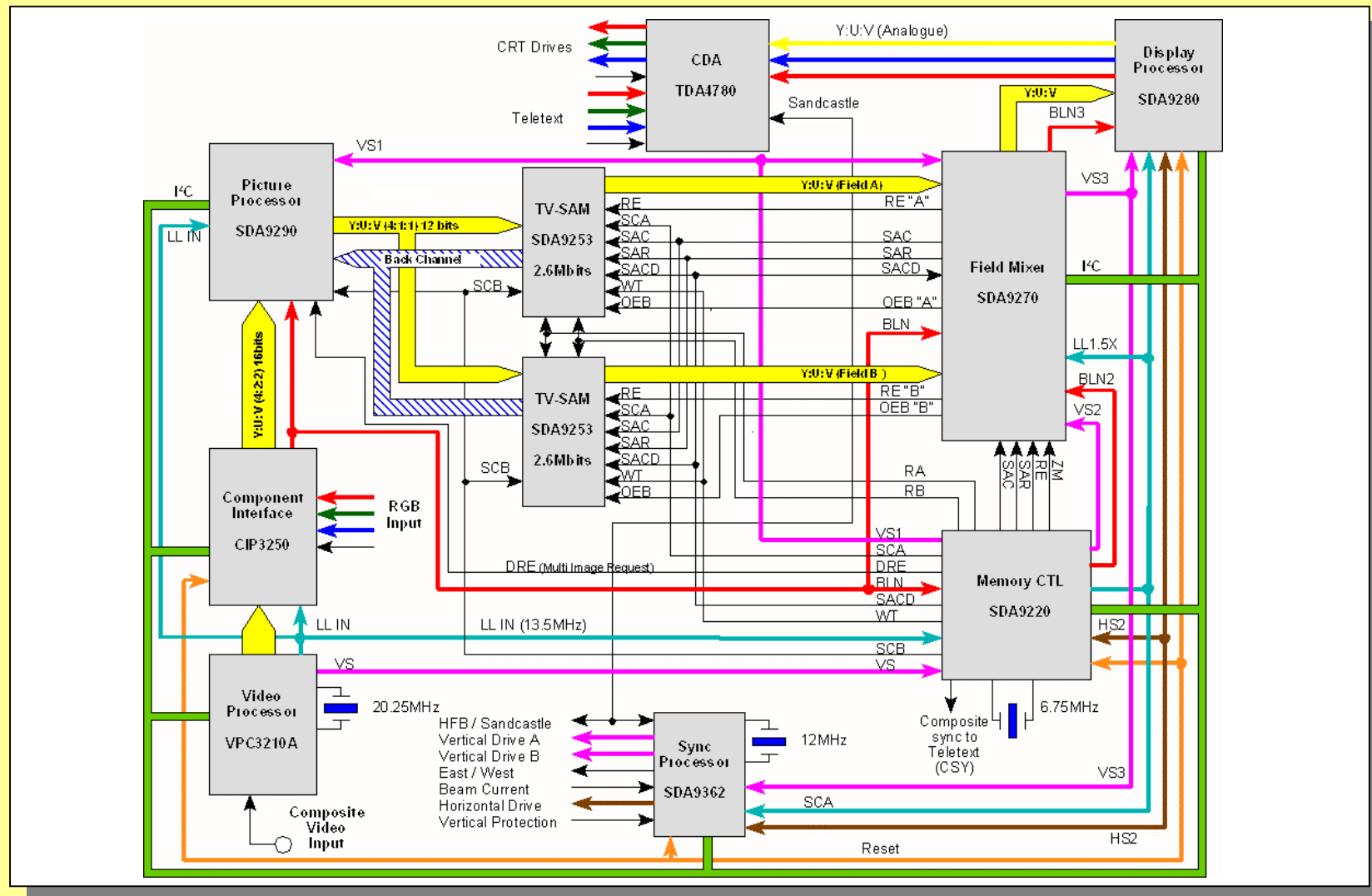
East West Correction

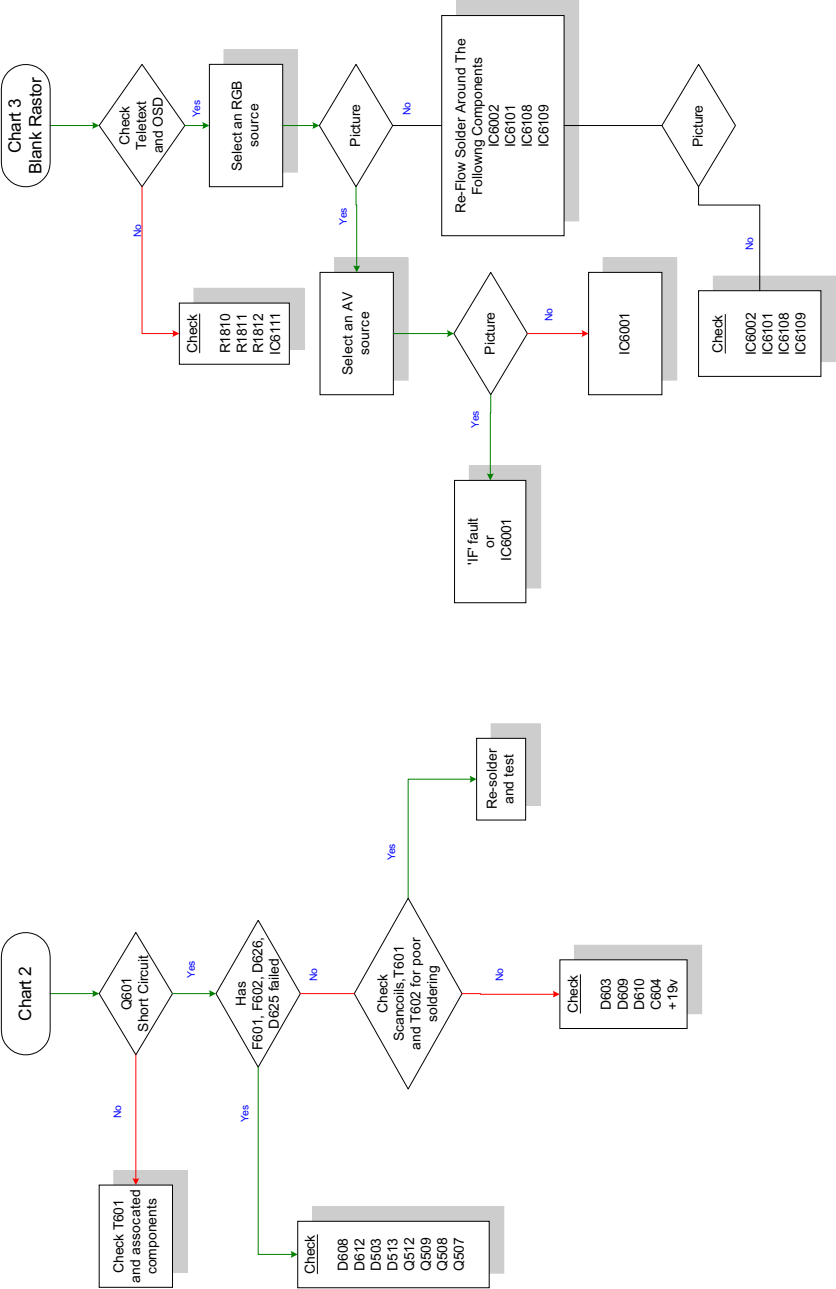
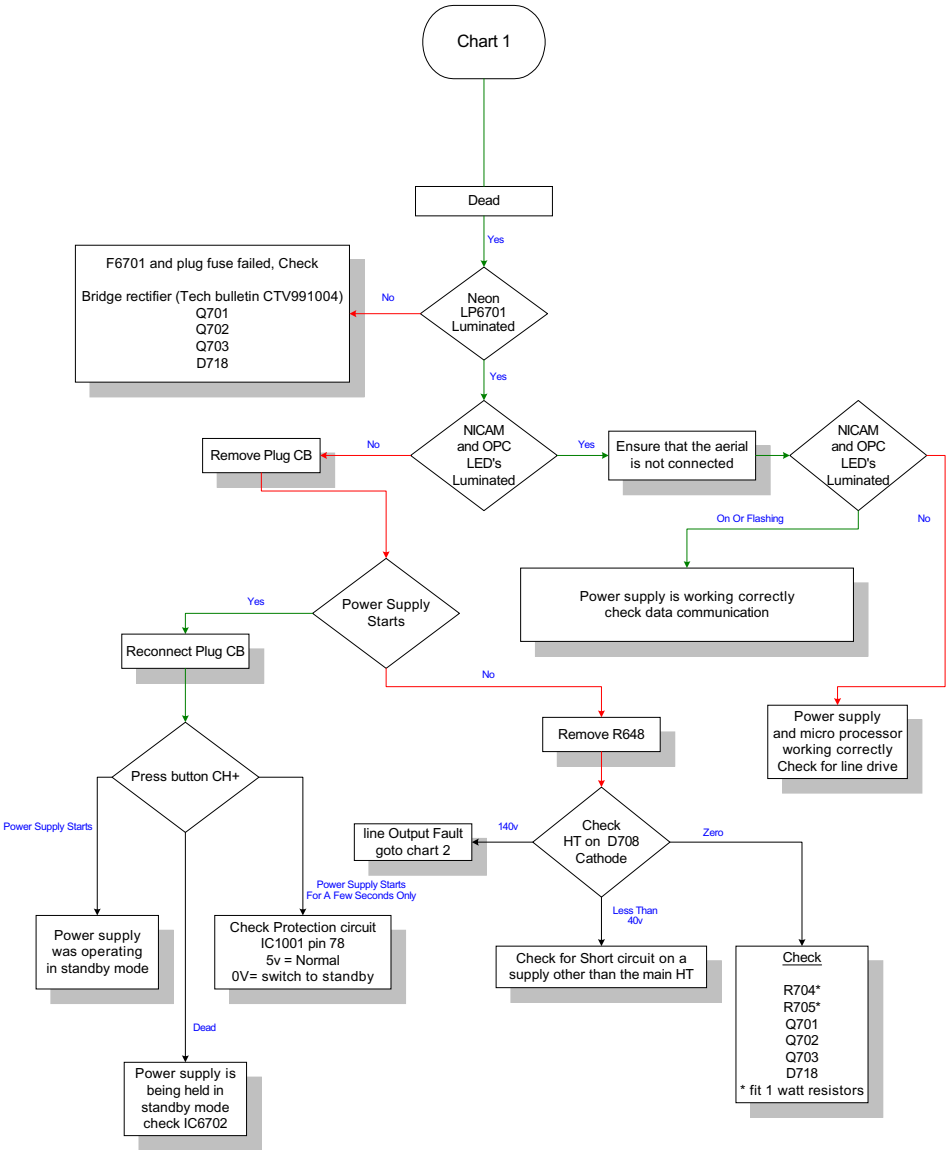


Vertical Output



100Hz Block Diagram





TELEVISION TECHNICAL BULLETIN

MODELS 66DW18H 76DW18H

SYMPTOM While in the RGB mode, sync may be lost when the channel up or down buttons are pressed.

CAUSE Corruption of the EPROM data.

ACTION Change the EPROM, using the part number given below.

<u>REF NO</u>	<u>DESCRIPTION</u>	<u>PART NUMBER</u>	<u>PRICE CODE</u>
IC1004	EPROM, 66DW18H	CH-IX1642CJH0	AZ
IC1004	EPROM, 76DW18H	CH-IX1642CJH1	AX

TELEVISION TECHNICAL BULLETIN

MODELS 66DW18H 76DW18H 76EF19H 76EF20H

SYMPTOM The following problems can occur on the 100Hz PWB.

- Intermittent digital noise on the picture
- Intermittent mosaic squares on the picture
- Mosaic effect if the 100Hz PWB is tapped
- Red, green or blue screen if the 100Hz PWB is tapped

CAUSE Problems around the field mixer IC, SDA9270.

- IC6108 in the 66DW18H and 76DW18H
- IC6105 in the 76EF19H and 76EF20H

ACTION Carry out the following counter measures.

1. Make sure that there are no dry joints on the Mother PWB
2. Resolder IC6108/IC6105 by reflowing the device - it is not necessary to remove IC6108/IC6105

Note that you can operate the 100Hz PWB with the shield cans removed.

It is important that these are returned to there original condition when the job is completed.

TELEVISION TECHNICAL BULLETIN

MODELS 66DW18H 76DW18H

SYMPTOM While in the NTSC mode, colour or sync may be lost.

CAUSE Corruption of the EPROM data.

ACTION Change the EPROM, using the part number given below.

<u>REF NO</u>	<u>DESCRIPTION</u>	<u>PART NUMBER</u>	<u>PRICE CODE</u>
IC1004	EPROM, 66DW18H	CH-IX1642CJH0	AZ
IC1004	EPROM, 76DW18H	CH-IX1642CJH1	AX

TELEVISION TECHNICAL BULLETIN

MODELS 66DW18H 76DW18H

SYMPTOM Poor teletext performance.

CAUSE Poor video signal level into the teletext decoder and errors in the EPROM data.

ACTION Carry out the following circuit change.

1. Change R447 (connected to pin 9 of IC401) with a 0R jumper.
2. Change the EPROM (IC1004) with the one listed below.

<u>REF NO</u>	<u>DESCRIPTION</u>	<u>PART NUMBER</u>	<u>PRICE CODE</u>
IC1004	EPROM, 66DW18H	CH-IX1642CJH0	AZ
IC1004	EPROM, 76DW18H	CH-IX1642CJH1	AX
R447	SMD resistor, 0R	VRS-TV1JD000J	AA

TELEVISION TECHNICAL BULLETIN

MODELS 66DW18H 76DW18H

SYMPTOM In the RGB mode, the picture is displaced to the right.

CAUSE Error in the EEPROM data.

ACTION While in the service mode, change the data in the following location.

NVM Page : 08
NVM Address : 5C
Data : 45 (was 36)

TELEVISION TECHNICAL BULLETIN

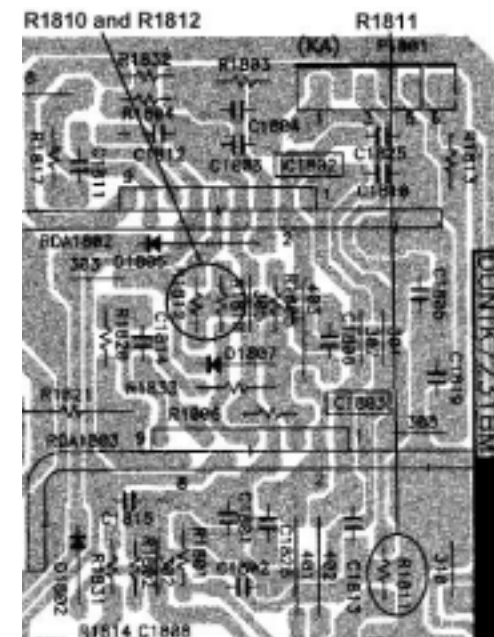
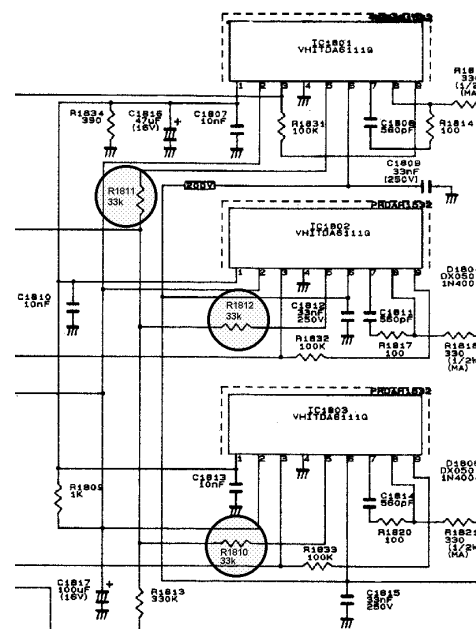
MODELS 66DW18H 76DW18H

SYMPTOM No picture - blank raster.

CAUSE R1810, R1811 and R1812 changing in value.

ACTION Replace R1810, R1811 and R1812.

REF NO	DESCRIPTION	PART NUMBER	PRICE CODE
R1810	Resistor 33k Ω , 1/8W	VRD-RA2BE333J	AB
R1811	Resistor 33k Ω , 1/8W	VRD-RA2BE333J	AB
R1812	Resistor 33k Ω , 1/8W	VRD-RA2BE333J	AB



Location of R1810, R1811 and R1812 on the CRT PWB

TELEVISION TECHNICAL BULLETIN

MODELS 66DW18H 76DW18H

SYMPTOM Failure of Q509.

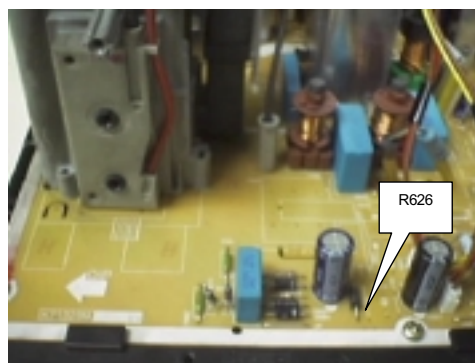
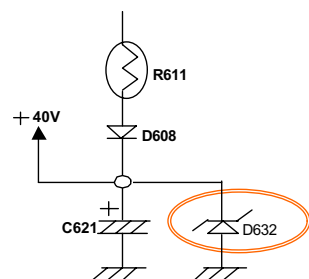
CAUSE Excessive excursions of the positive forty volt supply from the line stage.

ACTION Fit an extra zener diode, D632, in the position of R626 as shown in the diagram below.

Note that this diode has been fitted during production as of the following serial numbers.

66DW18H - 712620
76DW18H - 714463

REF NO	DESCRIPTION	PART NUMBER	PRICE CODE
D632	Zener diode, 47V	RH-EX0431BMZZ	AA



Sharp Electronics (UK) Limited

Reference UK84602X
Revision 1



White – Carry out as required, Yellow – Carry out as required and whenever the unit comes in for service, Red – Carry out on all units

TELEVISION TECHNICAL BULLETIN

MODELS 66DW18H 76DW18H

SYMPTOM The receiver does not turn on - mains fuse blown.

CAUSE Bridge rectifier diodes short circuit (D701, D702, D703 and D704).

ACTION Replace D701, D702, D703 and D704 with the part specified below.

REF NO	DESCRIPTION	PART NUMBER	PRICE CODE
D701	Diode, RM4ALF-L1	RH-DX0317BMZZ	AD
D702	Diode, RM4ALF-L1	RH-DX0317BMZZ	AD
D703	Diode, RM4ALF-L1	RH-DX0317BMZZ	AD
D704	Diode, RM4ALF-L1	RH-DX0317BMZZ	AD



Sharp Electronics (UK) Limited

Reference UK93000X
Revision 1



White – Carry out as required, Yellow – Carry out as required and whenever the unit comes in for service, Red – Carry out on all units

TELEVISION TECHNICAL BULLETIN

MODELS 66DW18H

REASON During production, the CRT has been changed from a Philips to a Thomson type.

ACTION When replacing a Philips CRT for a Thomson one, carry out the following.

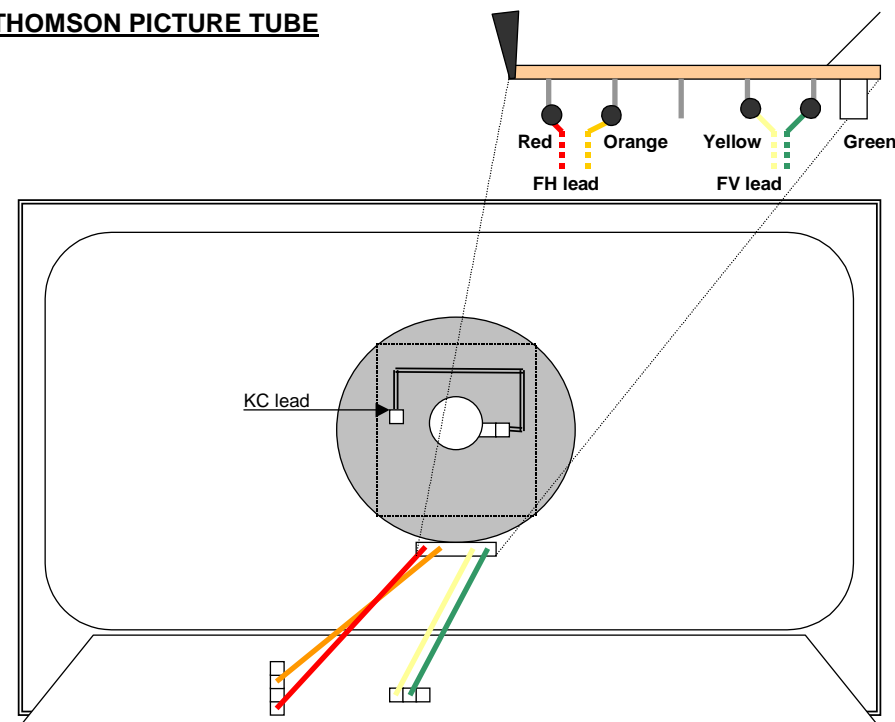
1. Replace the CRT.
2. Replace wires FH, FV and KC as indicated on the following pages.
3. Replace R609 with a 2.2R, 5% 2W resistor.
4. Replace C601 with a 8.2nF, 1.5kV capacitor.
5. Add a 4.7nF, 1.6kV capacitor in parallel with C601. This is screen printed on the top of the mother PWB as C633 (see page 9 of the service manual).
6. Remove SMD resistor R804.
7. On the CRT socket PWB, add two 100nF, 5% 63V capacitors, designated C1860 and C1862 (see page 11 of the service manual – component side of the PWB).

When replacing a Thomson CRT for a Philips one, carry out the reverse of the above.

REF NO	DESCRIPTION	PART NUMBER	PRICE CODE
VB	66cm CRT, 16:9	VB66EGV2322*N	CT
KC	Wire lead	QCNW-2775BMZZ	AF
R609	Resistor, 2.2R, 2W	VRN-VV3DB2R2J	AA
C601	Capacitor 8.2nF, 1.5kV	RC-FZ0147BMZZ	AE
C633	Capacitor 4.7nF, 1.5kV	RC-FZ0148BMZZ	AD
C1860	Capacitor 100nf, 63V	RC-FZ9104BMNJ	AB
C1862	Capacitor 100nf, 63V	RC-FZ9104BMNJ	AB

TELEVISION TECHNICAL BULLETIN

THOMSON PICTURE TUBE

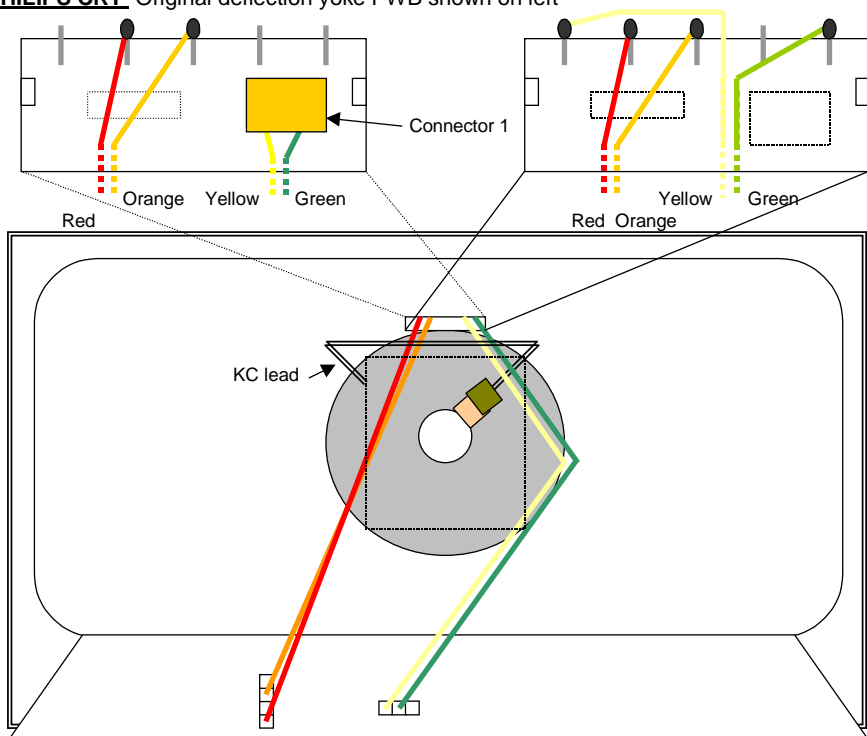


To change the deflection yoke wiring from a Philips CRT to a Thomson CRT, proceed as follows.

1. Unsolder the red and orange FH leads from the deflection yoke.
2. Remove connector 1 from the yellow and green leads.
3. Strip the yellow and green wires of insulation (about 4mm).
4. Solder the red and orange (FH) leads as shown above.
5. Solder the yellow and green (FV) leads as shown above.
6. Replace lead KC (QCNW-2757BMZZ) connects the CRT socket to the neck of the CRT with QCNW-2775BMZZ type.

TELEVISION TECHNICAL BULLETIN

PHILIPS CRT Original deflection yoke PWB shown on left



To change the deflection yoke wiring from a Thomson CRT to a Philips CRT, proceed as follows

1. Unsolder both the green and yellow (FV) and red and orange (FH) leads from the deflection yoke PWB.
2. Solder these leads to the Philips CRT as shown above.
3. Replace wire KC (QCNW-2775BMZZ) that connects from the CRT socket PWB to the neck of the CRT with lead QCNW-2757BMZZ.

TELEVISION TECHNICAL BULLETIN

MODELS 66DW18H 76DW18H 76EF19H 76EF20H

SYMPTOM The following problems can occur on the 100Hz PWB.

- Intermittent digital noise on the picture
- Intermittent mosaic squares on the picture
- Mosaic effect if the 100Hz PWB is tapped
- Red, green or blue screen if the 100Hz PWB is tapped

CAUSE Problems around the field mixer IC, SDA9270.

- IC6108 in the 66DW18H and 76DW18H
- IC6105 in the 76EF19H and 76EF20H

ACTION Carry out the following counter measures.

1. Make sure that there are no dry joints on the Mother PWB
2. Resolder IC6108/IC6105 by reflowing the device - it is not necessary to remove IC6108/IC6105

Note that you can operate the 100Hz PWB with the shield cans removed.

It is important that these are returned to there original condition when the job is completed.